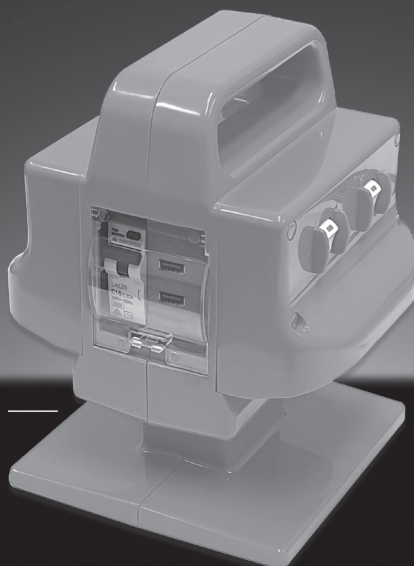




**2 USB OUTLETS**  
**3.1 AMP**  
 Charges tablets & phones

**4 OUTLETS POWERBLOCK**

**HEAVY DUTY**  
**10 AMP**



**IP33**

**IMPACT RESISTANT**  
 Brightly visible orange case

**RCBO**  
 Safety Switch & Circuit Breaker

**WORKSITE APPROVED**  
 AS/NZS 3012 RATED

— TRODOS —

## Instruction Manual

**MPB96U**

The Mercator MPB96U has a RCBO device, which incorporates overload and residual current protection that provide protection against electrocution and over-current faults.

The MPB96U has 4 outlets, each one switched individually with a double pole switch. The case is made from high impact resilient plastic, which includes a wrap around cord storage facility on the base and a carry handle on top. It is suitable for use on building sites, workshops & within the home. Its advanced design, with sockets on underside of enclosure, provides protection against water ingress when used outdoors.

### Safety Switch – Principle of Operation

The safety switch is RCBO device that incorporates overload and residual current protection with an electronic sensing device that constantly monitors the balance of current flow between active and neutral within the plugged in appliance. Should your body contact a live part of the appliance, an imbalance is sensed by the safety switch and the supply is automatically switched OFF.

### Important

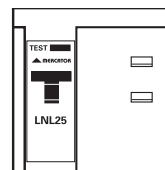
Use of a safety switch does not eliminate the need for basic electrical safety precautions.

### How To Test The Safety Switch

Before use, the safety switch must be checked to ensure it is operating correctly. This procedure should be performed on a regular basis.

#### Do not use the unit if the test fails.

1. Plug your MPB96U into a fixed 240 volt outlet and switch ON.
2. Lift the clear plastic cover on the side of the case to access the safety switch.
3. Place the Safety Switch in the "I" (ON) position by lifting the switch lever upward till fully UP position.
4. Press the "T" test button. This will immediately cause the device to trip, disconnecting supply and moving the switch lever to "0" (OFF) position. This confirms that the safety switch is operational.



If the device does not trip as explained above, check the safety switch in the switchboard (if one is fitted), this may have tripped prior to the safety switch in the MPB96U operating. If so, reset and test again. If considered faulty, the unit should be returned to the place of purchase for replacement.

5. After tripping reset the safety switch to the ON position by lifting the switch lever upward to the "I" (ON) position. If power is not restored when the safety switch has been reset, check any safety switch in the switchboard, this may have also tripped and require resetting.

## USB Outlet

You can connect your USB powered or recharge devices to the two USB outlets.

Caution: For safety, do not leave devices charging for long periods unattended. Disconnect once fully charged.

### IMPORTANT

**Do not use the unit if the test fails to trip the safety switch or the power is not restored when reset.**

## Faulty Equipment

**Always unplug equipment to achieve isolation before inspection or repair.**

## Safety Switch Operation

If the safety switch trips at any time during operation, the equipment being used should be immediately unplugged and checked by a qualified technician. Sometimes where a number of outlets are being used simultaneously to supply appliances, an accumulation of earth-leakage currents can cause "nuisance" tripping. If this occurs each appliance should be individually checked by a qualified technician before using.

## Overload Device Operation

The safety switch is a RCBO device that incorporates overload and residual current protection. The device will operate when the rating of the MPB96U has been exceeded. This can occur when a faulty appliance has been connected, or when too many appliances are being supplied at one time causing an over current fault (maximum total loading is 10 amp or 2400 watt). If an appliance is suspected of being faulty, a qualified technician should check it.

**Precaution should be taken before resetting the device. Suspected appliance should be checked by qualified technician to ensure safe operation. To reset the device, just lift the lever upward to "I" (ON) position (fully UP position).**



## For all Sales & Warranty enquiries

Mercator (ACN 005 946 958)

Building 3, 31-41 Joseph Street,  
Blackburn North, Victoria, 3130

P.O. Box 1065, Blackburn North LPO, Blackburn North, 3130

For sales and product information telephone

Customer Service: 1300 552 255

MRIN005094

## Important Notes

- Always plug directly into a wall socket, not an extension lead
- Always unplug equipment to achieve isolation before inspection or repair
- The use of a safety switch does not remove the need to follow basic safety precautions
- The safety switch provides protection against electrical faults to earth, it does not protect you against an electric shock caused by contacting both active and neutral conductors of an electrical circuit. The overload device provides protection against over current faults through the active conductor.
- If the MPB96U has sustained damage such as from being dropped or immersion in water, do not use again until checked by a qualified technician.
- The MPB96U complies with requirements of AS/NZS 3012 for use on construction and demolition sites.

## SPECIFICATIONS

Model	MPB96U
Output Rating	10A 2400W
Residual Current	30mA
Short Circuit Current	6kA
AS/NZS 3190 Classification	Class H PRCD
AS60529 IP Code	IP33
Power Outlet	4
USB Outlet	2
USB Rating	3.1A
USB Output	5V

## Mercator Warranty\*

Mercator guarantees this product against defects of materials and workmanship for a period of 12 months from the date of purchase provided the product is used for its proper purpose, in accordance with Mercator's recommendations and within such voltage and current limits as are specified by Mercator in relation to the product. Mercator will at its own option and cost make good, or replace this product with the same or similar product and return it to you, or provide a credit for any product manufactured or supplied by it, which proves to be defective within the limits set out above provided that no repairs, alterations or modifications to the product have been undertaken or attempted by anyone, other than Mercator or its authorized agents. Should you wish to make a claim under this guarantee, the product and proof of purchase must be returned pre-paid by you to the place of purchase.

This guarantee is in addition to and does not take away from any other rights and remedies you may have under any relevant law.

Our goods come with guarantees that cannot be excluded under the Australian Consumer Law. You are entitled to a replacement or refund for a major failure and for compensation for any other reasonably foreseeable loss or damage. You are also entitled to have the goods repaired

or replaced if the goods fail to be of acceptable quality and the failure does not amount to a major failure.

Please retain your proof of purchase for all warranty claims.