

Features

- High impact polycarbonate construction
- Even light distribution
- 1.7m flex and plug for easy installation
- Emergency Version - Maintained Emergency compliant to AS2293

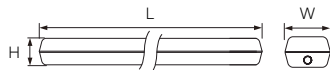
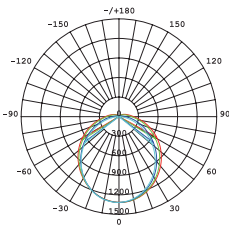


Applications


Temporary lighting on construction sites

Warranty

1 year



Product Data

Order Code	Wattage	CCT	Lumen Output	Beam Angle	Battery Type	Charging Time	Discharging Time	Size (LxWxH)mm	Weight (kg)
214144EM 	40W	4000K	3600Lm	120°	LiFePO4 6.4V 1500mAh	20H	2H	1140X75X66	1.2
214144	40W	4000K	3600Lm	120°	N/A	N/A	N/A	1140X75X66	1.2

[1] Operating temperature: 0°C~+40°C

[2] Voltage: 220-240V

[3] PF>=0.9

Emergency Version Only

Luminaire Classifications	Maximum Spacings (M)															
	Mounting Height (M)															
	21	24	27	3	3.3	3.6	4	4.5	5	6	7	8	9	10	15	
C0-C180	D63	19.4	20.3	21.1	21.8	22.4	23.0	23.7	24.5	25.2	26.4	27.4	28.1	28.6	28.9	28.0
C90-C270	D32	15.4	16.1	16.7	17.2	17.6	18.0	18.5	19.1	19.5	20.2	20.6	20.7	20.6	20.3	14.6

Specifications are for reference only and may be changed without prior notice.

