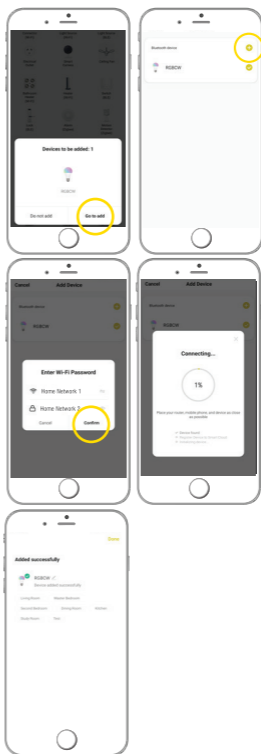


- The app will automatically scan for devices and once found will prompt **'Devices to be added: x'**. Select **'Go To Add'**
- Select **'+'** to add device.
- Verify your WiFi Network and Enter your WiFi Network Password. Connection will now begin.
- Once connected you will be prompted **'Added successfully'**. Select the room device is located. eg. 'Lounge'. Select the pen icon to change the device name then select done.
- The Smart Device can now be controlled by the BrilliantSmart App.



Warning

1. To prevent injury, this apparatus must be installed safely and correctly.
2. Do not open or tamper with smart device. Injury may occur.
3. For indoor use only. Not suitable for outdoors.
4. Please make sure the smart device is not overloaded.
5. Do not allow children to play with wall switch tuning ON/OFF rapidly. This can cause smart device to reset.
6. Power surge/power loss could possibly reset smart device. If this happens follow setup instructions.

Brilliant Lighting

956 Stud Road
Rowville Vic 3178 Australia

www.brilliantlighting.com.au

Australian Sales

T 03 9765 2555
T 1800 817 754 (interstate only)
F 03 9763 0277
E sales@brilliantlighting.com.au

2332 08/21 00

New Zealand Sales

T 09 974 9618
E sales@brilliantlighting.co.nz





SMART WiFi CANDLE CCT + RGB LED

21892



**NO HUB
REQUIRED**



works with the
Google Assistant

Works with
IFTTT



RGB colour
changing

USER MANUAL

Box content

Smart WiFi Candle CCT + RGB LED X 1
User Manual x 1



• E14 Base

Technical Specifications

Model Number: 21892

CCT LED: Warm White - daylight

RGB LED: Red, Green Blue

Working voltage: 220V - 240V AC 50Hz

Power: 4.5W 36mA

Dimmable: via BrilliantSmart app

Dimension: 104mm x Ø37mm

Base: E14

Weight: 27g

TA: 0...+35°C

Classification: Class II Construction

Security: Mac Encryption; WEP/WAPI/TKIP/AES

WiFi Standard: IEEE802.11b/g/n

System Req's: iOS 8.0 or higher, Android 4.1 or higher

**BEFORE INSTALLATION, PLEASE CHECK
THAT THE LOCATION OF THE SMART
DEVICE IS WITHIN RANGE OF YOUR HOME
WIFI AND SIGNAL IS STRONG (2 BARS).**

Installation

IMPORTANT SAFETY ISSUES

Ensure the power is disconnected before installing. This product is NOT suitable for damp or explosive environments. Modification of this product will void any warranty. Indoor use only.

Power is to be turned off at existing wall switch prior to installation.

Insert smart device into suitable type light socket/lamp holder by gently pushing then slight twist till globe is locked in position clockwise.

Be sure smart globe is secured in socket/lamp holder.

Turn on smart device via existing wall switch and follow the BrilliantSmart app steps.

Connect to your WiFi

Ensure your mobile phone is connected to your 2.4GHz WiFi network.

Your mobile phone and your smart device needs to be within good signal strength range of your WiFi router. (Refer to your router specifications for max range.)

Download the BrilliantSmart App

Please download the free BrilliantSmart app from the App store or Google Play store, or scan the QR code.



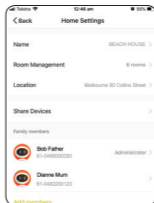
Register the BrilliantSmart App

Open the BrilliantSmart app.
For new users, register a new account or if existing user, login with your user name and password.

Configure your BrilliantSmart App

Setting up your Home

You can setup multiple homes or locations. Click **'Add Home'** button. Or Click on **'Home'** top left if you are adding or modifying details then **'Home Management'** to setup your home(s), add or rename rooms and share devices.



Add your Smart Device to your App

1. On initial power-on, the globe will begin blinking rapidly and be ready to pair. (2 times per second) if smart globe does not start blinking turn OFF/On 3 times or until light starts to blink rapidly)
2. Open the BrilliantSmart app, tap **'Add Device'** (if empty room) or **'+'** to add your Smart Device.

