



VECTOR-II 56" AC CEILING FAN

**The popular VECTOR-II
now available in 56"
(1420mm) size.**

55W
AC
MOTOR

ABS
BLADES &
BODY

56
INCH
1420mm

13650
m³/hr
AIRFLOW

15°
CEILING
RAKE MAX

6YR
WARRANTY



**Wall Control
Included**



**The tradie's choice for fans, VECTOR-II, now comes in 56"
size to suit larger areas. Available in pure white or matt
black, it will fit any home decor.**

- Durable ABS plastic construction
- Ezi-Fit blades reduce fan assembly and installation time
- Tropically rated
- Suitable for indoor and enclosed alfresco areas
- Durable corrosion and UV resistant body and canopy construction with high strength moulded ABS blades
- Quiet and powerful 55W AC motor
- Pre-assembled motor and down-rod assembly
- Raked ceiling installation up to 15 degrees
- 3 speed wall control with light switch included
- Tropically rated
- 6 year warranty, including a 3 year in-home warranty on the motor*

APPLICATIONS

- Bedrooms, lounge, family rooms and patios
- Indoors or enclosed alfresco areas not exposed to the weather



Watch our demonstration
video here



PURE WHITE WITHOUT LIGHT



MATT BLACK WITHOUT LIGHT



VECTOR-II 56" AC CEILING FAN

TECHNICAL SPECIFICATIONS

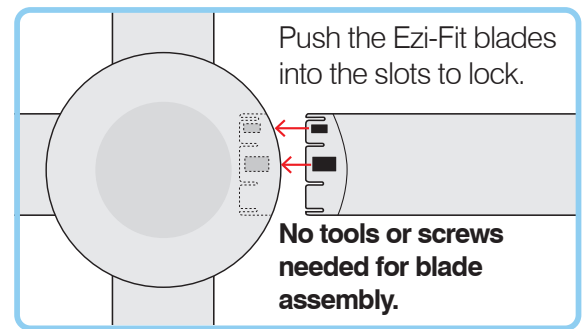
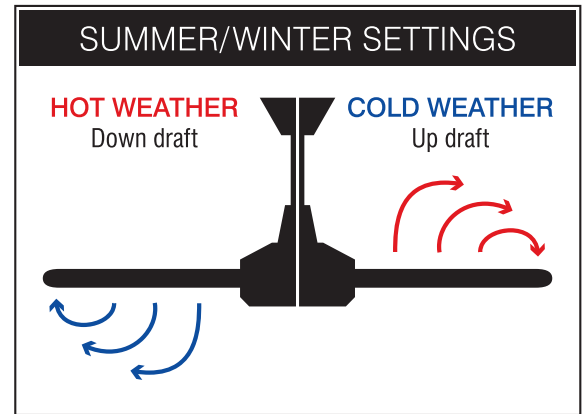
Size	56 inch (1420mm)
Motor Type	AC (Alternate Current)
Operating Voltage	220-240V AC 50Hz
Motor Wattage	55W
Construction	ABS body and canopy
Blade Material	Moulded ABS (x4)
Ceiling install	Hangsure
Blade Pitch	14 degree (effective)
Ceiling Rake	15 degree max
Control	Wall 3 speed control with light switch (included)
Other models available	22565/05: 56" Pure White with CCT Light 22565/06: 56" Matt Black with CCT Light
Warranty	3 year in-home plus 3 year replacement (6-Year) <i>*Limited warranty for wall controller, remote controller and light. Refer to warranty card inside the box for more details.</i>
Standards:	AS/NZS 60335-1 AS/NZS 60335-2-80 AS/NZS 60598-1 AS/NZS 60598-2-1
Patent:	2018201157 (pending)
Airflow:	13,650m3/hr MAX, 180 RPM

ACCESSORIES (sold separately)

Extension Rod with loom kits, 900mm x Ø21mm:	100550/05 white, 100550/06 black
Extension Rod with loom kits, 1800mm x Ø21mm:	21912/05 white 180cm 21912/06 matt black 180cm
Remote Kits	99222 LCD Display 99111 Smart WiFi 99999 BASIC 99444 BASIC 99888 WALL WIFI 99777 WALL MULTI FAN 88888 BASIC TOUCH

INSTALLATION

Must be installed by a licensed electrician



	MODEL	COLOUR	DESCRIPTION	BOX SIZE	GROSS WEIGHT	BOX QTY	BARCODE/TUN
RETAIL BOX	22563/05	Pure White	Vector-II 56 CEILING FAN	W638 x H330 x D284 mm	7.6 kg	1 pc	9 312641 225638 >
RETAIL BOX	22563/06	Matt Black	Vector-II 56 CEILING FAN	W638 x H330 x D284 mm	7.6 kg	1 pc	9 312641 225645 >