

Ventairtm

THE AIR MOVEMENT SPECIALISTS

3 IN 1 BATHROOM FAN, HEAT & LIGHT

IMPORTANT INSTALLATION INSTRUCTION AND WARRANTY INSTRUCTIONS

Thank you and congratulations on your purchase of the Ventair 3 in 1 Bathroom Fan, Heat & Light. Please read these instructions carefully before installing and using the product. Keep the instructions handy for future reference.

Electrical wiring must only be done by a licensed electrician and a "Certificate of Compliance" must be issued completion of the installation.

LOCATION

- 1) Precautions must be taken to avoid the back-flow of gases into the room from the open flue of gas or other fuel-burning appliances.
- 2) The distance between the sides of the heater and the sides and any adjacent ceiling recessed heater shall not be less than four times the minimum distance specified for the distance between the sides of the heater and any building element adjacent to it.
- 3) The switches and other controls of the appliance should be installed so that they cannot be touched by a person in the bath or shower.

The unit must be located and installed in accordance with AS/NZS 3000 and local building codes and regulations concerning the discharge of air have to be fulfilled.

The unit can be installed in any room that requires direct radiant heating and circulated air flow such as bathrooms, ensuites, laundries etc. The unit can be installed in flat ceilings with a minimum height of 2 meters. At least 250mm height clearance in the ceiling cavity is required to ensure sufficient ventilation for moisture to disperse. The unit must also be installed at least 400mm away from the walls.

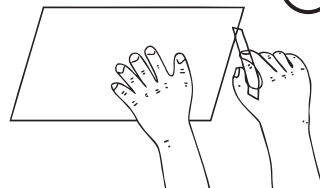
Between the unit and thermal insulation please also keep 200mm clearance when installation. Ensure adequate inlets exist through windows, vents or under the door for air flow.

POWER

AC220-240V, 50Hz electrical supply is required. The unit can be connected to a lighting or power circuit if loading permits. All electrical work must be carried out in accordance with AS/NZS 3000 or latest edition thereof.

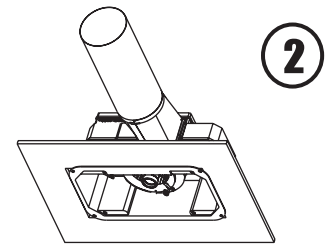
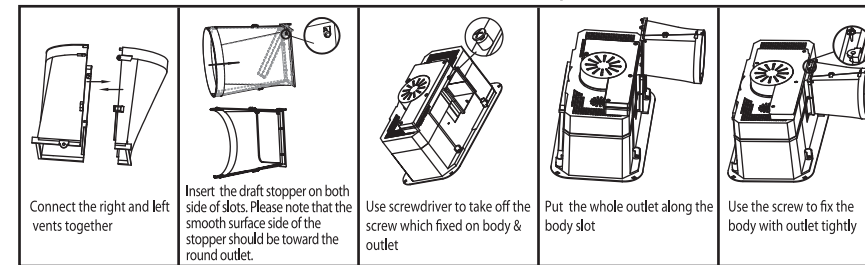
MOUNTING

1. The unit may be mounted either between joists using the inbuilt clip fasteners or against a joist using a screw through the flange plate. Use this card in its open state as a template. Place in the required location and mark out the hole cutting size. Hole size is 370mm x 202mm.



2. Before commencing cutting ensure that the area behind the intended location is clear of all cables, pipes and joists. Once clear, cut out the section along the previously marked lines.

Please remove the heating lamps, then assemble the air outlet before insert the unit into the hole. Air outlet assemble steps as below:



3. Connect the ducting if required to the outer grille of the unit. Insert the unit into the square hole being sure to pull the side clips inward so that the body can pass through the hole without damaging the plaster. Rotate the swing clips to hold motor body in place (figure 1) then tighten screw to let the clip clap onto the ceiling board (figure 2).

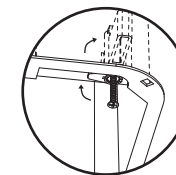


figure 1

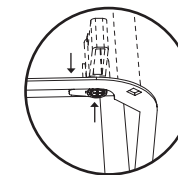
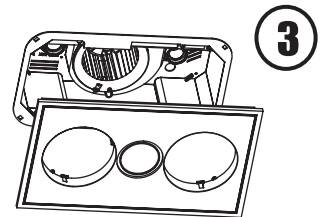
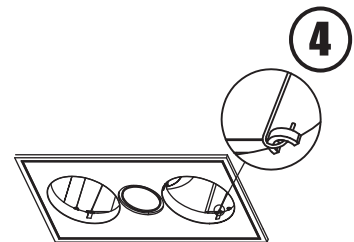


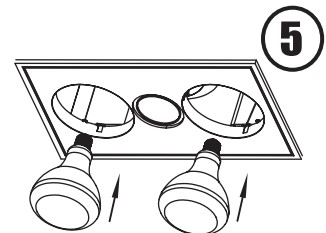
figure 2



4. Connect the led downlight plugs firstly. Hold the fascia against the body of the heater and the ceiling and attach the securing spring clips to hold the fascia in place.



5. Now screw in the two large heat lamps into the lamp holder through the holes provided in the fascia. The globes should be screwed up firmly to ensure a good electrical contact but don't over tighten.

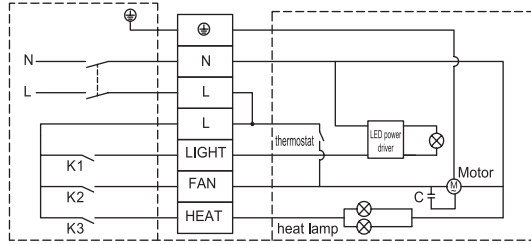


ELECTRICAL WIRING

The bathroom heater unit must be wired through either a plug and socket or an all-pole disconnecting switch (SW 1) in accordance with Australian Wiring Rules AS/NZS 3000.

Note: This unit is fitted with a thermostat switch which will operate to automatically switch the fan on in the event that the internal temperature of the unit exceeds 80 °C.

1. Clip the switched into the backing plate in the desired order and install the plate on the wall.
2. Connect the wiring to the three switches as shown in the below electrical diagram.
3. Remove the terminal cover on the heater unit and wire according to the label adjacent to the terminal block.
Make sure all cables are securely connected and refit the terminal cover.
4. Clean the fascia and globes with a soft moist cloth. Turn on power and check the switch operation.



TERMINAL BLOCK
220-240V~ 50Hz

LIGHT: 10W tri-color led downlight
HEATER: 2 x 275W
FAN: 45W

MAIN TECHNICAL PARAMETERS

Model No	Input	Heat	Light	Motor	Airflow	Hole-cutting Size
M2HDLXWH/ M2HDLXS	220-240V~ 50Hz	275W heat lamps X 2	10W tri-color LED	45W	280m ³ /H	370x202mm

Ventair is leading the Industry by ensuring all airflow data is gathered in accordance with International industry standard ISO 5801.

• ISO (International Organization for Standardization): An International standard tested under strict guidelines providing accurate data and commonly used in the professional specifying market.

CARE AND MAINTENANCE

1. During the installation of this bathroom heater, please make sure that the person in the bathtub or in the shower area cannot reach the electrical switches and other electrical controllers.
2. This bathroom heater mustn't be installed below the electrical outlet.
3. This bathroom heater mustn't be installed near by the curtains and other combustible materials.
4. Instructions for correct installation required and must include:
 - i) The appliance must under no circumstances to be covered with insulation material or similar material.
 - ii) Joists, beams and rafters shall not be cut or notched to install the appliance.
5. Lamps must be cool before cleaning. To clean bulbs and surrounds wipe with a cloth dampened with detergent or liquid glass cleaner.
This appliance is not intended for use by persons (including children) with reduced physical, sensory or mental capabilities, or lack of experience and knowledge, unless they have been given supervision or instruction concerning use of the appliance by a person responsible for their safety.
Children should be supervised to ensure that they do not play with the appliance.

REPLACEMENT GLOBES

HEAT LAMPS: The heat lamps must only be replaced with 275 watt (maximum) globes. (Ventair Model VHL275).
CENTRE LAMP: 10 watt (maximum) tri-color led downlight, 3000K, 4000K, 5000K. (Ventair Model MDL10-New).

ventairtm

THE AIR MOVEMENT SPECIALISTS

BATHROOM HEATER WARRANTY CARD

This unit must be installed by a qualified licensed **electrician**. Every Ventair 3 in 1 is thoroughly inspected and tested before being released for sale. In addition to any warranties or conditions implied by applicable Statue or Regulation, **Ventair** Design warrants all of its bathroom heaters against defective workmanship and faulty materials for 3 years from the original date of purchase. Ventair Design undertakes, at its option, to repair or replace, free of charge, each product or part there of subject to the below warranty conditions:

- 1) The fan or relevant part has not been modified, subjected to misuse, neglect, or been involved in an accident.
- 2) The repairs are not required as a result of normal wear and tear.
- 3) The product was installed by a licensed electrical contractor in accordance with this instruction manual.
- 4) No solid state speed control device has been used with the appliance.
- 5) A copy of the original receipt of purchase is presented.
- 6) Globes supplied are not covered by this warranty.

Please keep this warranty card in a safe place. This card must be produced in the event of service being required.

MODEL (SKU) NUMBER: _____

DATE OF PURCHASE: _____

RETAILER: _____

RECEIPT NUMBER: _____

INSTALLED BY: _____

LICENCE#: _____ PH: _____

DESCRIPTION OF FAULT: _____