

Installation Manual

Date: September 3, 2024 3:21 PM

NEO-PRO-35-REC

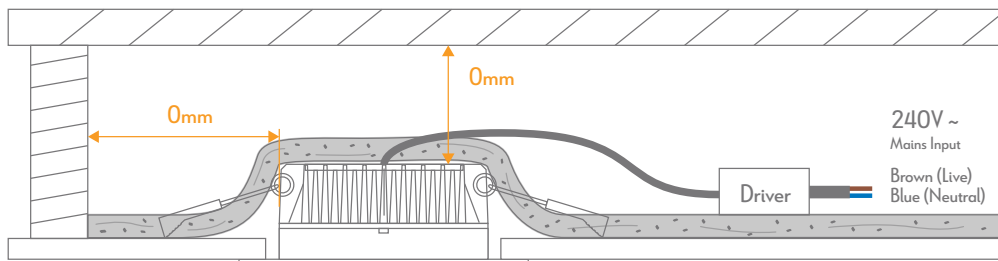
Thank you for purchasing your new NEO-PRO-35-REC Downlight, Please take the time to read and understand the instruction sheet below. Failure to do so may void warranty.

Specifications

Voltage:	240V AC	Lumen (±5%):	Warm White 3000K - 3200Lm Neutral White 4000K - 3400Lm White 5700K - 3300Lm	Dimmable:	Yes*
Power:	35W	Beam Angle:	90°	IP Rating:	65**
CRI:	≤90	CCT:	3000K - 4000K - 5700K	Lifespan:	50,000hrs
Cutout:	Ø200-220mm				

*Fully dimmable with suitable dimmers. **IP65 from front only.

Minimum clearance distances to flammable building elements.



Notes:

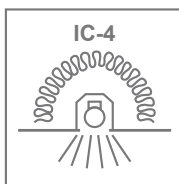
The LED driver is NOT suitable for covering with insulation material.

Warning-Risk of overheating or fire if the clearance distances are compromised.

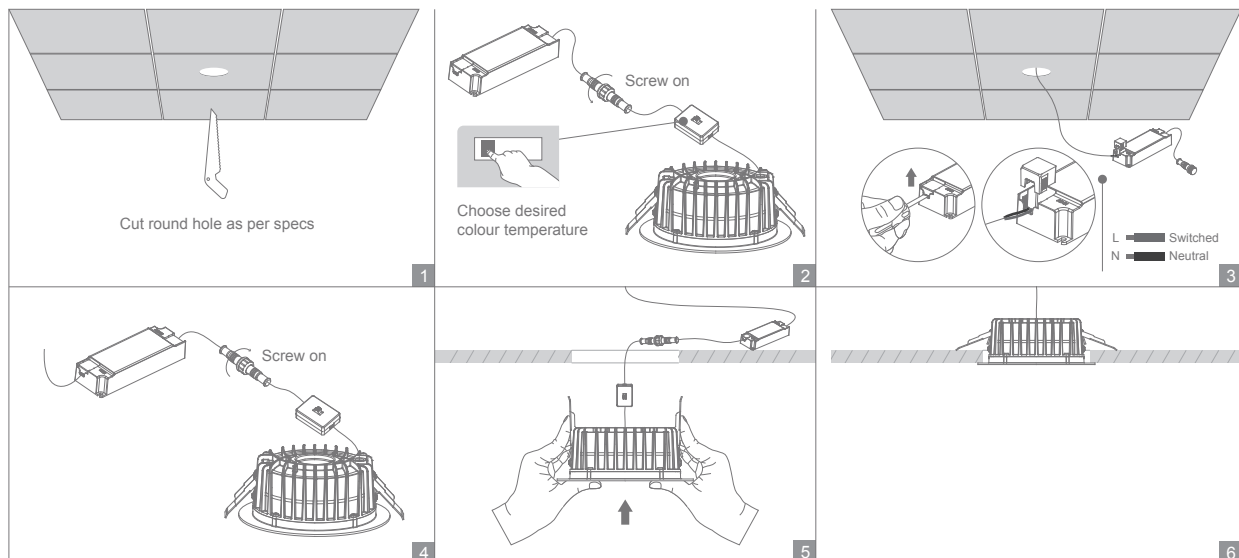
The diagram above illustrates the necessary clearance distance for IC-4 downlights.

To ensure the maximum lifespan of the downlight, Domus recommends a 20mm clearance for air transfer between the living space and the roof space.

Please note that Domus's 5 Year Residential Warranty will be shortened to 3 years if the downlight is installed without adequate air transfer on all sides.



- IC-4 downlights can be used where air transfer is not permitted or not desired between living space and roof space (there will be no air transfer between spaces even if there is no insulation covering the luminaire).
- Building Insulation does not have to be non-flammable.
- Building Insulation must maintain structural integrity at 90 degrees C.
- **Important: IC-4 Downlights are not to be used in the Fire Rated Applications.**



Note: -The lamp must be installed by professional electrician
-Ensure the power supply is switched off before fitting this product

-Do not touch the lamp when in use
-Keep away from hot steam and corrosive gas