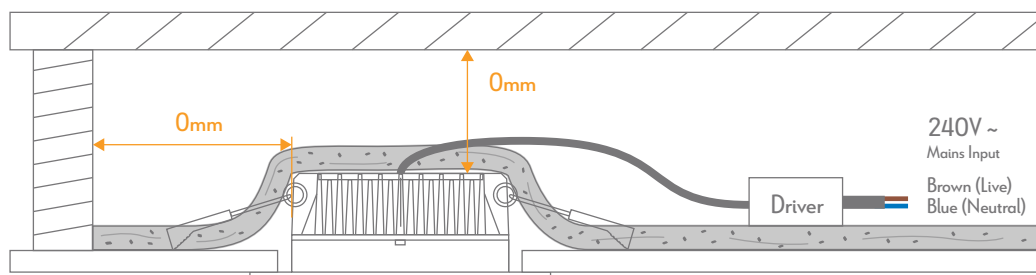


Swap 8 Sleek

Specifications

Voltage:	240V AC	Lumen (±5%):	Warm White 3000K - 800lm Neutral White 4000K - 900lm White 5700K - 850lm	Dimmable:	Yes
Power:	8W	Beam Angle:	60°	Operating Temp:	-20 ~ 45°C
IP Rating:	IP44	CCT:	3000K - 4000K - 5700K	Power Factor:	0.9
CRI:	≥80	Lifespan:	35,000hrs	Cutout:	Ø90-100mm

Minimum clearance distances to flammable building elements.



Notes:

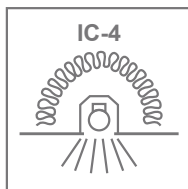
The LED driver is NOT suitable for covering with insulation material.

Warning-Risk of overheating or fire if the clearance distances are compromised.

The diagram above illustrates the necessary clearance distance for IC-4 downlights.

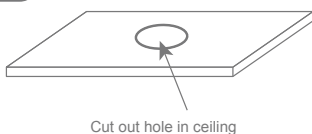
To ensure the maximum lifespan of the downlight, Domus recommends a 20mm clearance for air transfer between the living space and the roof space.

Please note that Domus's 5 Year Residential Warranty will be shortened to 3 years if the downlight is installed without adequate air transfer on all sides.



- IC-4 downlights can be used where air transfer is not permitted or not desired between living space and roof space (there will be no air transfer between spaces even if there is no insulation covering the luminaire).
- Building Insulation does not have to be non flammable.
- Building Insulation must maintain structural integrity at 90 degrees C.
- **Important: IC-4 Downlights are not to be used in the Fire Rated Applications.**

1



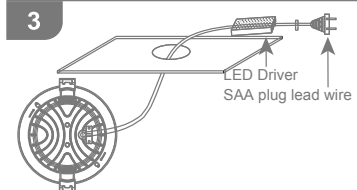
Cut out a hole in the ceiling. Ensure there is sufficient clearance in the area where you will be positioning the fitting.

2



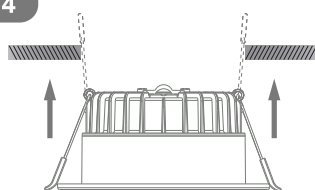
Choose the preferred colour temperature via the switch on the controller.

3



Connect the fitting to the mains via the power plug.

4



Fit the fixture in the ceiling by lifting the spring clips upwards.

5



Once in place the spring clips should be against the top of the ceiling and support the fitting.

Note: -The lamp must be installed by professional electrician
-Ensure the power supply is switched off before fitting this product

-Do not touch the lamp when in use
-Keep away from hot steam and corrosive gas